

## Instructions for Usage with SPYCE

### FRONIUS IG DatCom (IG 15 – 60)

---



**Imprint**

© Copyright **METEOTEST**. All rights reserved. Subject to change.

**METEOTEST**

Fabrikstrasse 14

CH-3012 Bern

Switzerland

Tel. +41 31 307 26 26

Fax +41 31 307 26 10

E-Mail [office@meteotest.ch](mailto:office@meteotest.ch)

Web [www.meteotest.ch](http://www.meteotest.ch) | [www.spyce.ch](http://www.spyce.ch)

1st edition 05/2007, st/cs

**SPYCE HOTLINE**

044 994 90 00

ENECOLO AG

## Contents

<b>1. Installing the Fronius IG DatCom Components .....</b>	<b>1</b>
1.1. Required components for communication with SPYCE .....	1
1.2. Mode of Operation .....	2
1.3. Instructions for installation « <a href="http://www.fronius.com">http://www.fronius.com</a> » .....	2
<b>2. Configuration.....</b>	<b>3</b>
2.1. E-Mail Configuration.....	3
2.2. Time.....	4
<b>3. Register your data logger in SPYCE .....</b>	<b>5</b>

## 1. Installing the Fronius IG DatCom Components

### 1.1. Required components for communication with SPYCE

In order to be able to send data to SPYCE from one or multiple Fronius IG inverters, the following components are required:

- Fronius IG data logger
- Tixi Message Modem
- Fronius IG ComCard for each inverter
- Laptop or PC to configure the Tixi Message Modem



Fig. 1: Tixi Message Modem

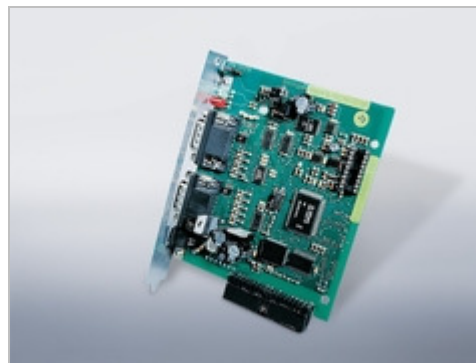


Fig. 2: Fronius IG ComCard



Fig. 3: Fronius inverter IG 15 - 60

## 1.2. Mode of Operation

The inverter's energy production data are sent to the data logger. The Tixi Message modem transfers the logger's data once daily to the SPYCE server.

After all components have been installed, the Tixi Message model must be initialized once. In order to do this, a laptop with the current version of the Fronius IG.access software is required.

## 1.3. Instructions for installation « <http://www.fronius.com> »

Instructions for installation of all components can be found on the Fronius website:

```
|| http://www.fronius.com
  L Solar Electronics
    L Info & Support
      L Documents & Downloads
        L User Manuals
          L System monitoring IG DatCom
```

The current Fronius IG.access software may be found here:

```
|| http://www.fronius.com
  L Solar Electronics
    L Info & Support
      L Documents & Downloads
        L Software
```

## 2. Configuration

### 2.1. E-Mail Configuration

When the modem is initialized, go to the following menu item:

```
| Settings
  |  L Datalogger Modem
    |  L Message Modem
```

Enter your e-mail settings according the instructions by Fronius (Dial in number, User name, SMTP server, sender address. Then, enter the following settings:

- activate „Internet Portal“
- Sending time: 02:00
- Recipient address: `fronius@spyce.ch`

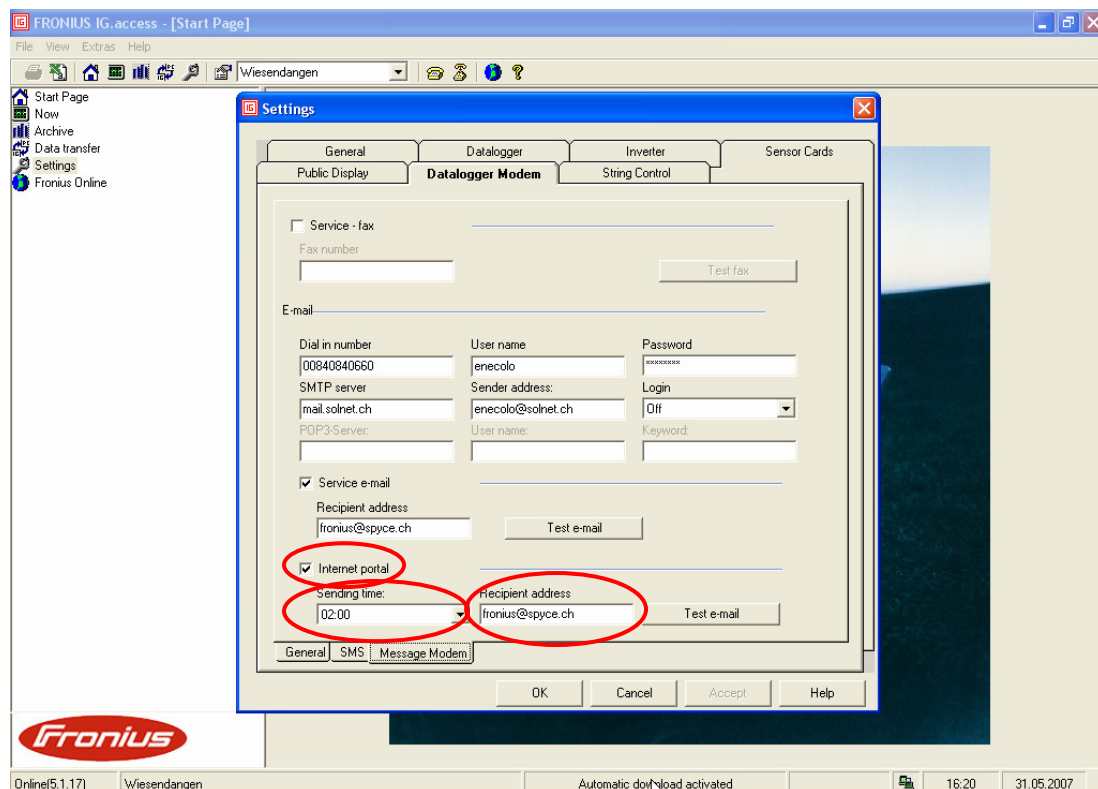


Fig. 4: Settings for e-mail transfer.

## 2.2. Time

Set the Data Save Rate of the inverter to 30 minutes. The time **must** be set to **winter time**.

- || Settings
  - L Datalogger -> Data Save Rate
    - L Date/Time -> Manual setting (winter time)

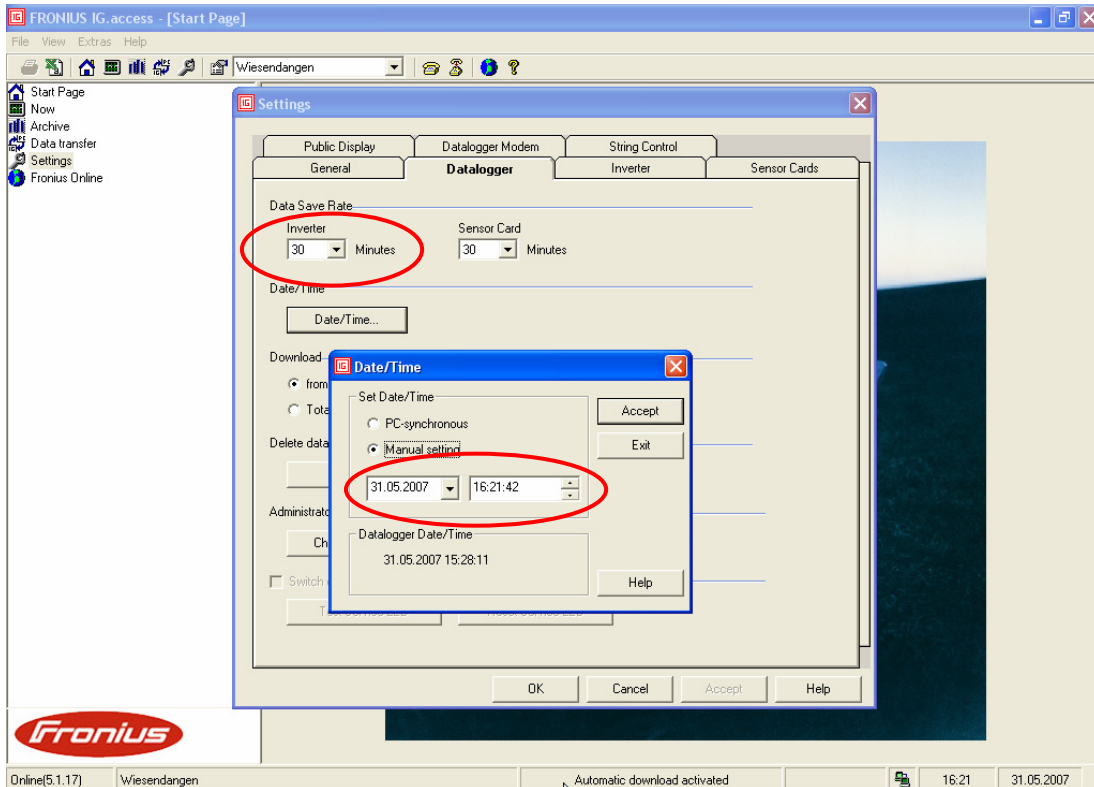


Fig. 5: The time must manually be set to winter time!

Your Fronius is now configured to daily send the production data of all attached inverters to SPYCE.

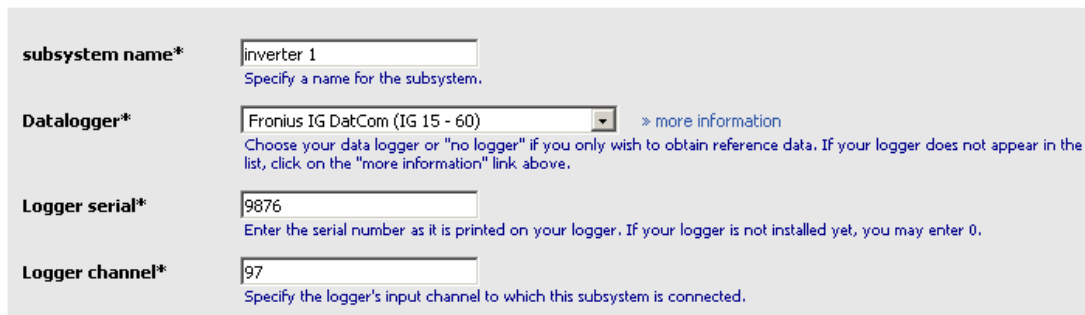
### 3. Registering your data logger in SPYCE

Log into your SPYCE account with your E-Mail and password. Register your site:

```
|| http://www.spyce.de => {login}!  
  L My Account  
    L Add a new site
```

Add a subsystem to your site:

```
|| http://www.spyce.de => {login}!  
  L My Account  
    L Add a subsystem
```



The screenshot shows a web form with four fields:

- subsystem name\*:** A text input field containing "inverter 1". Below it is the instruction: "Specify a name for the subsystem."
- Datalogger\*:** A dropdown menu showing "Fronius IG DatCom (IG 15 - 60)". To the right is a link: "> more information". Below the dropdown is the instruction: "Choose your data logger or 'no logger' if you only wish to obtain reference data. If your logger does not appear in the list, click on the 'more information' link above."
- Logger serial\*:** A text input field containing "9876". Below it is the instruction: "Enter the serial number as it is printed on your logger. If your logger is not installed yet, you may enter 0."
- Logger channel\*:** A text input field containing "97". Below it is the instruction: "Specify the logger's input channel to which this subsystem is connected."

Fig. 6: SPYCE settings to identify your inverter.

Choose:

- Data logger: Fronius IG DatCom (IG 15 – 60)
- Logger Serial-No.: the serial can be obtained from the data logger's menu (last 4 digits after the dot, see Fig. 7)
- Logger Channel: Each inverter must be assigned to a channel. This is done when installing and can be obtained from the inverter's display (see Fig. 8).

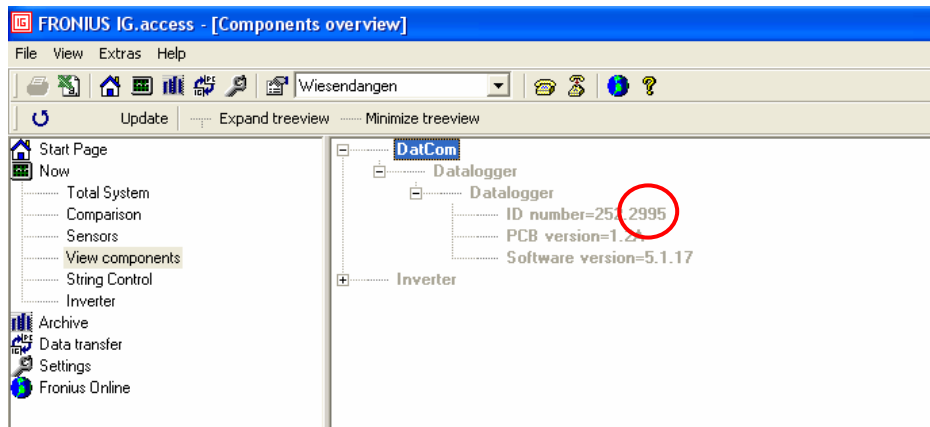


Fig. 7: Logger serial number: last four digits after the dot.

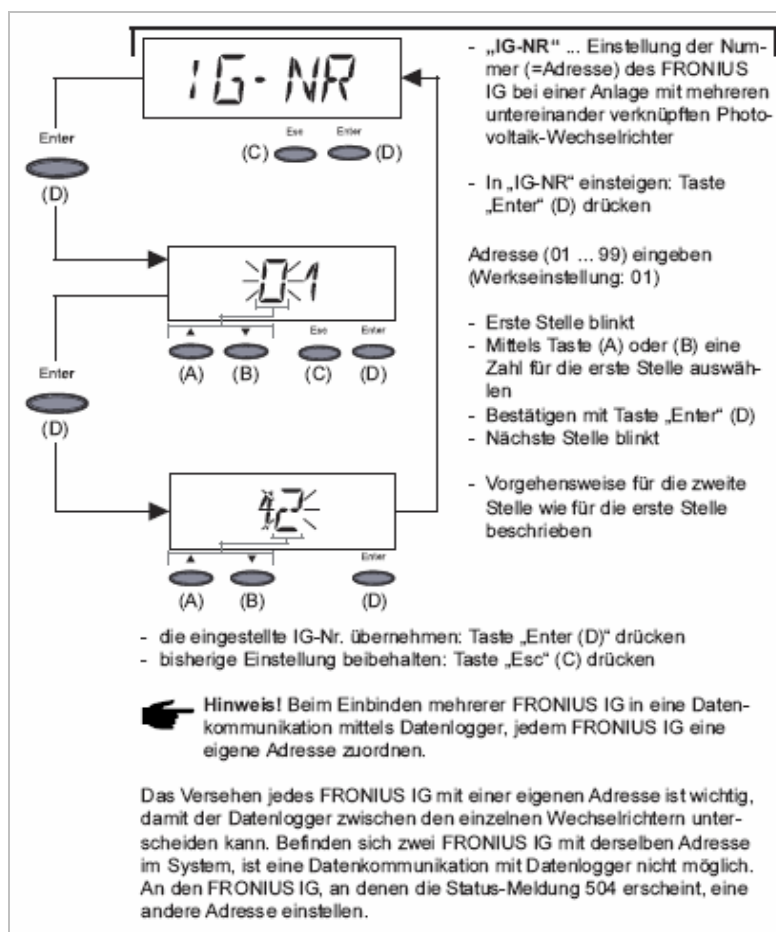


Fig. 8: Extract of the user's manual 012006

One day after installation you should see the first production data in your SPYCE account's production register. The produced power is shown as a blue line in the graph.

If you do not see any production data on your SPYCE account after 2 days, please call the SPYCE Hotline.