

## Instructions for Usage with SPYCE

### SMA SunnyData Control with NET Piggy Back

---



**Imprint**

© Copyright **METEOTEST**. All rights reserved. Subject to change without notice.

**METEOTEST**

Fabrikstrasse 14

CH-3012 Bern

Tel. +41 31 307 26 26

Fax +41 31 307 26 10

E-Mail [office@meteotest.ch](mailto:office@meteotest.ch)

Web [www.meteotest.ch](http://www.meteotest.ch) | [www.spyce.ch](http://www.spyce.ch)

3st Edition 02/2011, cs

## Contents

<b>1. Installation of the SunnyData Control with NET Piggy Back.....</b>	<b>1</b>
1.1. Required Components for Communication with SPYCE.....	1
1.2. Mode of operation .....	1
1.3. Installation instructions on « <a href="http://www.sma.de">http://www.sma.de</a> » .....	2
<b>2. Configuration.....</b>	<b>3</b>
2.1. E-Mail Settings.....	3
<b>3. Registering a Logger in SPYCE.....</b>	<b>6</b>

## 1. Installation of the SunnyData Control with NET Piggy Back

### 1.1. Required Components for Communication with SPYCE

The following components are required in order to be able to send data from one or several Sunny Boy inverters to:

- Sunny Boy Control (SBC) logger
- Software Sunny Data Control
- NET Piggy Back

Additionally, a notebook or personal computer is required to configure the software.



Fig. 1: Sunny Boy Control (SBC)

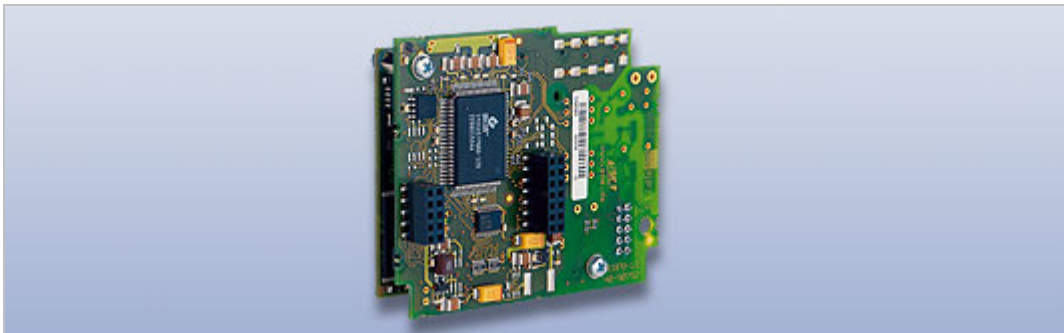


Fig. 2: NET Piggy Back

### 1.2. Mode of operation

The inverters' yield data are sent to the data logger via the serial port. The NET Piggy Back transfers the data stored on the logger once daily to the SPYCE server.

After installing all components, the SBC must be initialized once. In order to do this, a notebook or personal computer running the current Sunny Data Control software is required.

### 1.3. Installation instructions on «<http://www.sma.de>»

Instructions for installing all components are available on SMA's website:

```
|| http://www.sma.de
  L Solar Technology
    L Products
      L Communication
```

## 2. Configuration

### 2.1. E-Mail Settings

Open the Sunny Data Control software on your computer and connect with your PV system. The corresponding instructions are available in SMA's Manual for the Sunny Data Control.

Parameters

Choose the "Parameters" tab, and enter the following settings. Save these settings.

- DA\_Storage: ON
- DA\_Data Reading: ON
- DA\_Meas. Interval: 15 min
- FI\_SMTP Server: mail.SMA-Portal.com
- FI\_SPMAIL FROM: SBC + "Serialnumber" + @SMA.de  
z.B. SBC119019461@SMA.de
- FI\_SPMAIL TO: sma.sdc\_nbp@spyce.ch

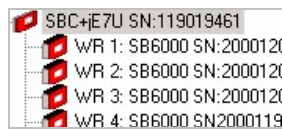


Fig. 3: Serial number of your Sunny Boy Control

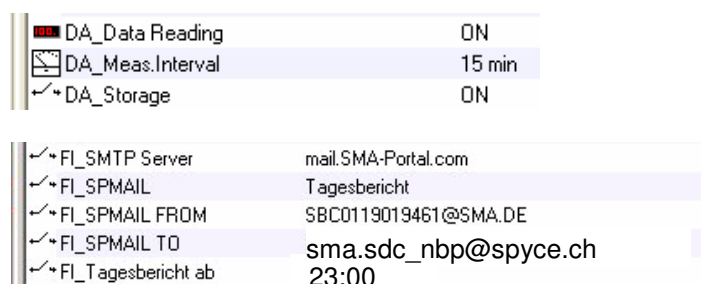


Fig. 4: Parameter settings

Choose the tab "Channel recording" for your SBC logger. Mark the channel "E-total" for recording and save these settings.

|| Channel recording



Fig. 5: Channel recording

For each inverter that is connected to your SBC, choose the tab " Channel recording ", mark the channel "E-total" for recording and save these settings.

|| Inverter  
 L Channel recording

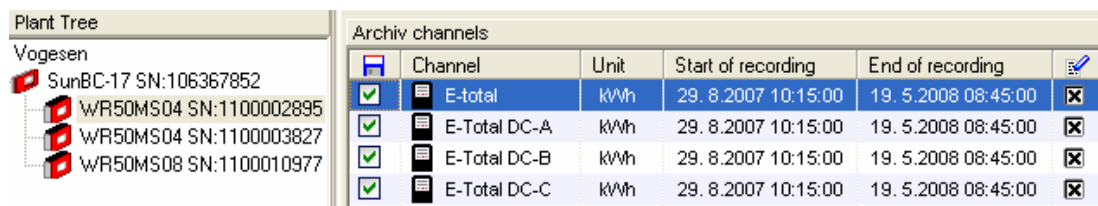


Fig. 6: Inverter, Channel recording

Your SBC with NET Piggy Back is now configured and will daily send its yield data to SPYCE.

## 2.2. Parameters for SYCE

Before you leave the configuration make sure to remember to following information:

### 2.2.1. Serial number of your datalogger

The serial number identifies your logger in SPYCE. SPYCE will parse the e-mail address from which the data are sent. Please make sure to use the same serial number when you enter the configuration in SPYCE:

Example: [SBC119019461@SMA.de](mailto:SBC119019461@SMA.de)

Serial: SBC119019461

### 2.3. Channel number for each inverter

SPYCE will identify each channel by a channel number which you see in the configuration view. Please make sure to use the corresponding channel for each inverter.

Plant Tree		Archiv channels					
Vogesien							
	SunBC-17 SN:106367852	<input checked="" type="checkbox"/>	E-total	kWh	29. 8.2007 10:15:00	19. 5.2008 08:45:00	<input checked="" type="checkbox"/>
	WRM50MS04 SN:1100002895	<input checked="" type="checkbox"/>	E-Total DC-A	kWh	29. 8.2007 10:15:00	19. 5.2008 08:45:00	<input checked="" type="checkbox"/>
	WRM50MS04 SN:1100003827	<input checked="" type="checkbox"/>	E-Total DC-B	kWh	29. 8.2007 10:15:00	19. 5.2008 08:45:00	<input checked="" type="checkbox"/>
	WRM50MS08 SN:1188810677	<input checked="" type="checkbox"/>	E-Total DC-C	kWh	29. 8.2007 10:15:00	19. 5.2008 08:45:00	<input checked="" type="checkbox"/>

Fig. 7: Channel number

#### Identification

subsystem name*	<input type="text" value="WRM50MS04"/>
Datalogger*	<input type="text" value="SMA SunnyData Control with NE"/>
Logger serial*	<input type="text" value="SBC119019461"/>
Logger channel*	<input type="text" value="1100002895"/>

Fig. 8: SPYCE configuration form

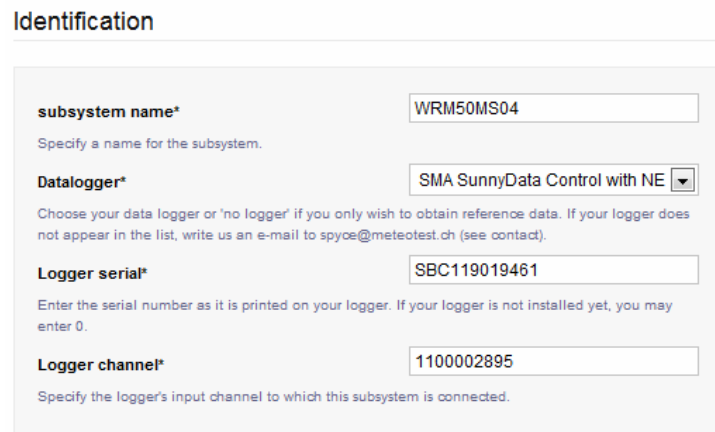
### 3. Registering a Logger in SPYCE

Log into your SPYCE account with your E-Mail and password. Register your site:

```
|| http://www.spyce.ch => (login)
  L Administration
    L PV-site configuration
      L add new PV-site
```

Add a subsystem to your site:

```
|| http://www.spyce.ch
  L Administration
    L PV-site configuration
      L Add a subsystem
```



The screenshot shows a web form titled "Identification" with the following fields and values:

- subsystem name\***: WRM50MS04 (Text input field)
- Datalogger\***: SMA SunnyData Control with NE (Dropdown menu)
- Logger serial\***: SBC119019461 (Text input field)
- Logger channel\***: 1100002895 (Text input field)

Below each field is a small instruction: "Specify a name for the subsystem.", "Choose your data logger or 'no logger' if you only wish to obtain reference data. If your logger does not appear in the list, write us an e-mail to [spyce@meteotest.ch](mailto:spyce@meteotest.ch) (see contact).", "Enter the serial number as it is printed on your logger. If your logger is not installed yet, you may enter 0.", and "Specify the logger's input channel to which this subsystem is connected."

Fig. 9: SPYCE Settings to identify loggers and inverters.

Choose and specify:

- data logger: SMA SunnyData Control with NET Piggy Back
- Logger Serial-No
- Logger channel: Each inverter must be assigned to a separate channel.

One day after installation you will see the first yield data of your inverter in the register "Production" on your SPYCE account.

If you do not see any data of your inverter after 2 days, please contact the SPYCE hotline.